

VISION
Building learners of tomorrow...

MISSION
To prepare individual learners for success in life, the Platte County School District provides meaningful experiences in a safe and caring environment.

VALUES
*Student Focus • Collaboration • High Expectations • Integrity
Visionary Leadership • Innovation • Results Orientation*



2022 Annual Report to the Community



Quality Continuous Improvement Focus

Platte County R-3 School District (PCR-3) is proud to call itself a Quality Continuous Improvement organization. Our District's culture and its strategic plan is guided by the tenets of our foundational elements - our **Vision, Mission, and Values**. PCR-3's strategic plan outlines goals, strategies, and improvements across three strategic focus areas: **Academics, Business, and Community**. Overall goals of each strategic focus area are listed below, and updated results are shown inside, along with updates to our community regarding the end of the 2021-22 and beginning of the 2022-23 school year.

Academics

GOAL: develop and enhance quality educational/instructional programs to improve overall and individual student academic performance

Business

GOAL: proactively and responsibly manage District growth, finances, and support services to improve student achievement

Community Students

GOAL: provide each student with a relevant education in a safe and caring environment

Community Staff

GOAL: attract, retain, and develop a high quality staff

Community Parents & Members

GOAL: improve internal and external stakeholder communication, involvement, and partnership



A Message to our Pirate Community:

Platte County School District continues to be an exciting place where educational excellence is more than a goal, it is our standard. Our commitment to provide a meaningful and relevant experience for each

child has created vast opportunities for our students to excel. And excel is exactly what they continue to do! Looking back over the past 12 months, our school community can be proud of a host of accomplishments from our students. Check out the expansive list of student successes and District highlights from 2022 in this report.

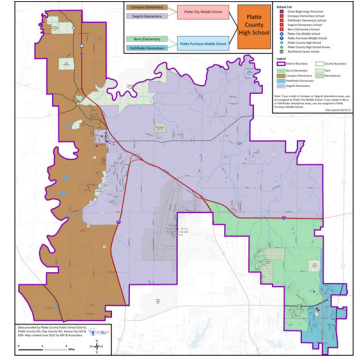
While we celebrate the achievements of our students, it is also important to note the hard work of our staff. Our instructional staff are continuing to enhance their craft through focused professional development and peer collaboration. Teachers and District leaders have worked hard to implement a new English Language Arts curriculum with an emphasis on phonics instruction in early elementary, as well as meaningful, relevant, and engaging learning experiences. They continue to improve daily instruction while implementing robust intervention and enrichment. Support staff members take pride in their work so our schools are safe, clean, and run smoothly to allow teaching and learning to remain the primary focus. PCR-3 employees are dedicated professionals committed to the success and wellbeing of our students. I am personally thankful for the continued efforts of all of our team members.

Finally, our schools continue to thrive because of a supportive and engaged community. The support from our patrons to pass the April 2021 No Tax Levy Increase

Bond Issue has allowed our schools to continue to proactively manage our growth while enhancing our learning environments. We're excited to have opened our new space at PCHS and look forward to opening our southern attendance area new middle school in the fall.

Please note the updated attendance boundary changes for next school year with the opening of Platte Purchase Middle School and conversion of Barry School to serve elementary students.

Many parents and community members have volunteered hours of time to participate in one or more Community Advisory committees providing feedback to improve our schools. School families continue to volunteer time in our schools to give staff and students much needed support.



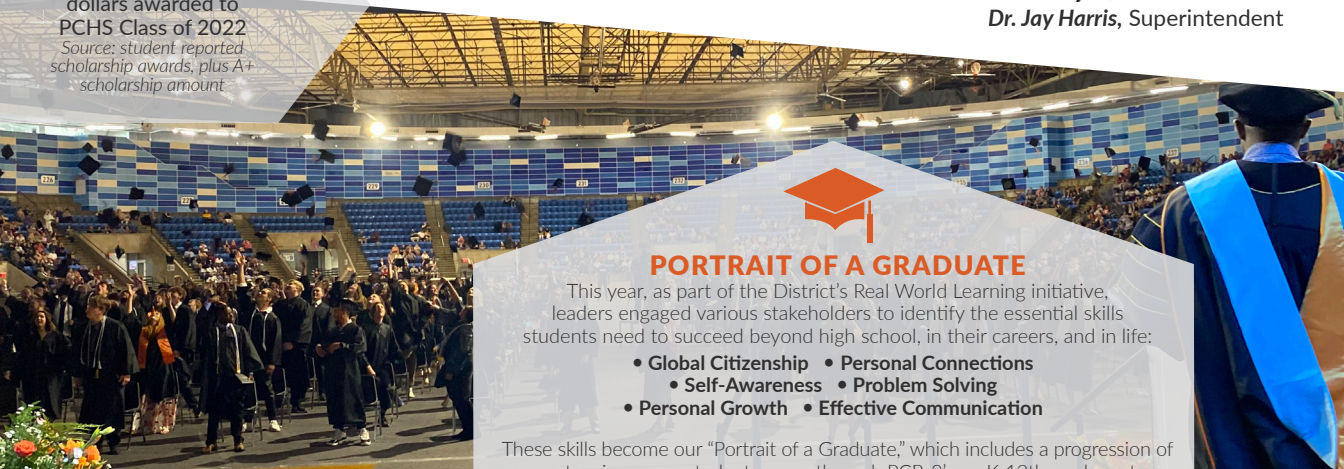
It is our committed professionals, hard working students, and engaged community members that provide the winning formula for a quality school system.

We will continue to set the bar high, build on our tradition, and create new pathways for student and staff excellence. While we are certainly proud of who we are, we know there is more to do. We remain focused on creating the systems for improvement to ensure our students' future days are their best days. Thank you for believing in Platte County Schools. It's a great time to be a Pirate!

Dr. Jay Harris, Superintendent

\$1.5M+

Amount of scholarship dollars awarded to PCHS Class of 2022
Source: student reported scholarship awards, plus A+ scholarship amount



PORTRAIT OF A GRADUATE

This year, as part of the District's Real World Learning initiative, leaders engaged various stakeholders to identify the essential skills students need to succeed beyond high school, in their careers, and in life:

- Global Citizenship
- Personal Connections
- Self-Awareness
- Problem Solving
- Personal Growth
- Effective Communication

These skills become our "Portrait of a Graduate," which includes a progression of competencies as our students move through PCR-3's preK-12th grade system.



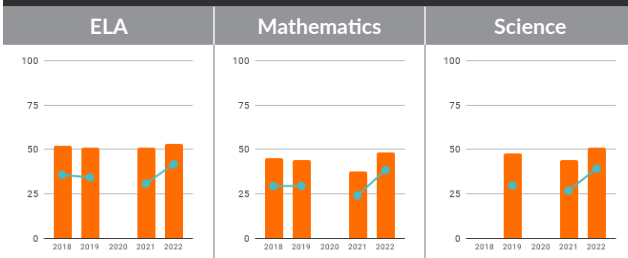
ACADEMICS

Platte County School District uses a variety of performance measures to ensure student progress toward success in life. Students in grades 3-8 annually take the grade-level Missouri Assessment Program (MAP) assessments in English Language Arts (ELA), Mathematics, and Science (grades 5 and 8). High school students take End-of-Course (EOC) exams upon successful completion of state-designated core content classes. The District's results on these assessments, both in whole and disaggregated into subgroups, combined with college and career readiness, attendance rates, and graduation rates, form the basis for the District's accreditation through the Missouri Department of Elementary and Secondary Education (DESE).

In addition to state assessment results, PCR-3 uses formative assessments, such as the Fastbridge Universal Screener and end of unit assessments, to analyze progress in shorter cycles and respond to student needs in a more expeditious, informed approach. Our Class of 2022's ACT average composite score is 21.9, with 57% of the graduating class taking the exam. While entrance requirements are changing, PCR-3 continues to provide students with guidance and assistance toward their post-secondary plans.

For more detailed academic results information, visit the District's Performance Results under the Strategic Plan channel at www.plattecountyschooldistrict.com.

Grades 3-8 MAP Scores



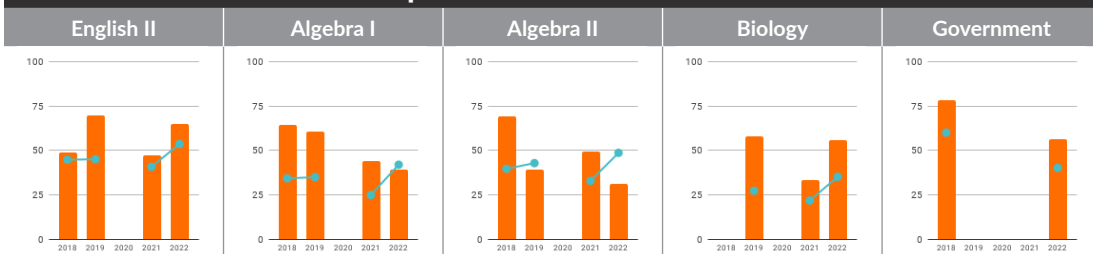
Missouri Assessment Program and End-of-Course Exam Scores.

The graphs to the left and below show PCR-3's and the state's percentage of students scoring proficient or advanced in the grade-level MAP and state-required EOCs. Source: DESE.

PCR-3
State

- In 2018, no Science test results were available because this year was a field test year for Science
- In 2019 and 2021, no Social Studies test results were available because this year was a field test year for Social Studies
- In 2020, no MAP or EOC assessments were given due to the COVID-19 pandemic

Required EOC Exam Scores



2022 ACT Results

STATE

20.3

PCR-3

21.9

Class of 2022 ACT Results. PCR-3's average composite ACT score for 2022 is 21.9 with 57% of our graduating class taking the exam. The District is continuing its ACT improvement plan which includes student workshops and prep courses, access to online prep materials, pre-ACT testing, and vouchers for students demonstrating preparation. Source: DESE





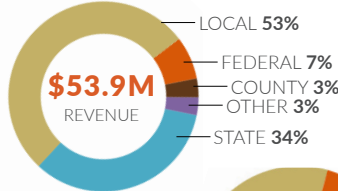
BUSINESS

The District has a long standing tradition of fiscal stability. The administration and Board of Education are committed to continuing this level of financial excellence into the future. Aligned to the District's Strategic Plan and long-range facility plan, our efforts will continue to strive for academic excellence while providing all patrons of the District with sound fiscal management to meet future challenges.

Tax Levy by District

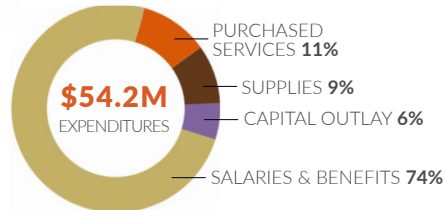
| | |
|----------------------|-----------------|
| Fort Osage | \$6.3700 |
| Raytown | \$6.3200 |
| Grandview | \$5.9557 |
| Liberty | \$5.9277 |
| Blue Springs | \$5.7286 |
| North Kansas City | \$5.6663 |
| Lee's Summit | \$5.4837 |
| Independence | \$5.4371 |
| Park Hill | \$5.3955 |
| Excelsior Springs | \$5.2262 |
| Platte County | \$5.0193 |
| Grain Valley | \$4.9263 |
| Smithville | \$4.8404 |
| Kearney | \$4.7742 |
| North Platte | \$4.7400 |
| West Platte | \$3.9999 |

Tax Levy by District. The District tax levy has remained the same since 2019, when it was lowered from 5.0439. This rate is applied per \$100 of assessed valuation.
Source: DESE



Financial Information.
The figures shown in these graphs do not include expenditures and revenue related to construction projects.

Source: Annual Financial Report



Energy Savings

66.7
kBtu/sf
BASELINE

46.0
kBtu/sf
2021-22

Energy Savings. Energy conservation measures were implemented across the District starting in 2016. As a result of these upgrades, effective building management, and ongoing optimization, PCR-3 has captured more than \$3.13M in cost avoidance savings (\$693,000 over projections).



NORTHLAND WORKFORCE DEVELOPMENT CENTER

Northland Career Center and PCR-3 are in a capital campaign to raise \$30M to match the \$30M award from the State of Missouri to build a new \$60M Northland Center for Workforce Development. The project will seek public and private funding without asking for a tax levy increase or bond issue from any Northland School District including PCR-3.

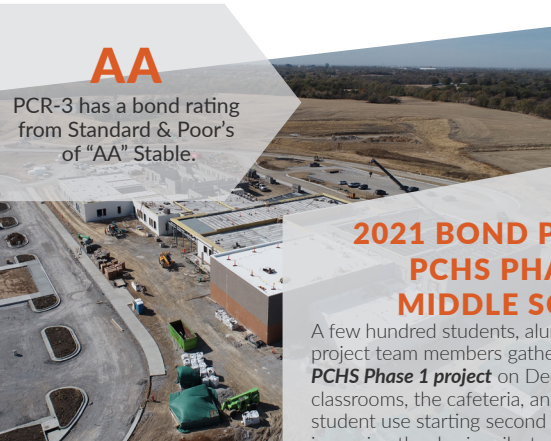


2021 BOND PROGRAM PROJECTS: PCHS PHASE 1 COMPLETE; MIDDLE SCHOOL ON TRACK

A few hundred students, alumni, staff, community members, and project team members gathered for the grand opening of the **PCHS Phase 1 project** on December 8. The new space, including classrooms, the cafeteria, and the Pirate Fieldhouse opened for full student use starting second semester. **Platte Purchase Middle School** is nearing the dry-in milestone of the project, and interior finishes have started. The site has taken on its core shape and will receive final touches this Spring. The project is on track to open Fall 2023.

AA

PCR-3 has a bond rating from Standard & Poor's of "AA" Stable.



COMMUNITY Students, Staff, Parents, and Members



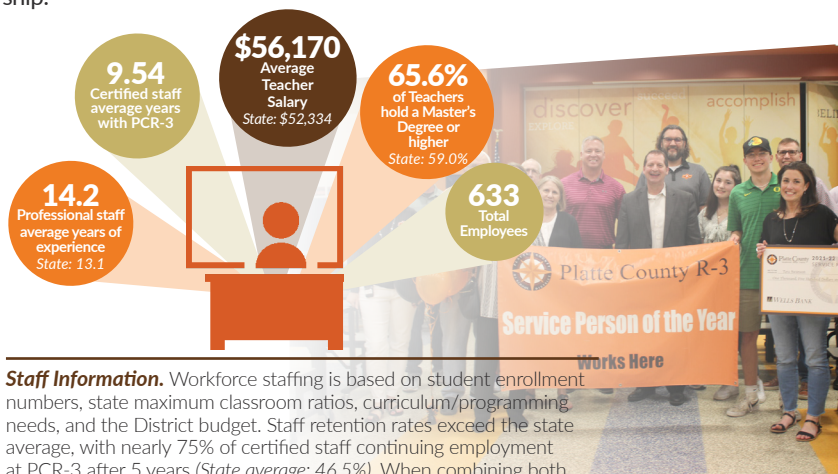
The Community focus area of the District's Strategic Plan encompasses goals for students, staff, parents, and community members. The Community-Students goal is to provide each student with a relevant education in a safe and caring environment. The Community-Staff goal is to attract, retain, and develop a high quality staff. The Community-Parents and Members goal is to improve internal and external stakeholder communication, involvement, and partnership.

Getting Ready for School

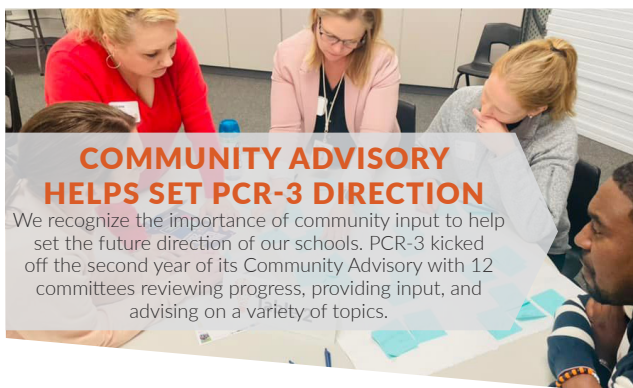


96 children served by
Parents as Teachers Program
61 Early Childhood students
2021-22 SCHOOL YEAR

Preparing PCR-3 Learners. Preparing children for school and life success is a focus at PCR-3, through our Parents as Teachers program as well as our early childhood program, Great Beginnings, located at both the District Education Center and Barry School.



Staff Information. Workforce staffing is based on student enrollment numbers, state maximum classroom ratios, curriculum/programming needs, and the District budget. Staff retention rates exceed the state average, with nearly 75% of certified staff continuing employment at PCR-3 after 5 years (State average: 46.5%). When combining both certified and classified staff, our five-year retention still exceeds 65%.



PREPARING INDIVIDUAL LEARNERS



Additional 2022 Student Successes and District Highlights

THEATRE Five Blue Star nominations, 10 Cappies nominations

FUTURE BUSINESS LEADERS OF AMERICA Gold Level Chapter & Seal of Merit, Outstanding Service, Local Chapter Report State Champions, 20 National qualifiers, two Top 15 National teams

PIRATE HALL OF FAME *LeeAnn Fadler, Donna Hulett, and Dave Lane* inducted

GIRLS SWIMMING Conference Champions, 12 State qualifiers, 2 school records broken

WRESTLING Girls undefeated Conference Champions Seven boys and three girls qualified for State; *KayLyn Munn, Jaydon Walls, and Jake Fernandez* State Champions

DANCE Hip Hop State Champions

BOYS BASKETBALL Conference Champions

DECA Four State qualifiers

ATHLETIC LEADERSHIP TEAM Wrote, directed, and produced winning "Why Sportsmanship Matters" video

SPEECH & DEBATE *Madelynn Darst* placed 2nd at State in Radio Speaking; *Charlotte Hammond* National qualifier in Informative Speaking

ARCHERY Four teams (PCHS, Barry, PCMS, Compass) competed at Nationals

PATHFINDER ELEMENTARY Became a Leader in Me Lighthouse School

BASEBALL Conference, District, and State Champions

ART Several juried works accepted; two KCAI Merit Scholarships

NATIONAL HONOR SOCIETY 75 new inductees

STAFF AND BOARD MEMBER RECOGNITION PCHS Counseling ASCA Model Program; Elementary Teacher *Samantha Brant* Fulbright Scholar; *Geoff Heckman* selected as National Board Counseling Chair; *Sharon Sherwood* certified as Distinguished Board Member

ROBOTICS Four PCHS teams and four PCMS teams qualified for State; *PCMS Teams 8778Y & 8778Z* and *PCHS Team 9065S* win State Championship; Four PCMS teams and two PCHS teams qualified for Worlds

TRACK & FIELD Eight events qualify for State; school record broken in the boys 4x100

PROJECT LEAD THE WAY Seven State Champion projects; Best of Show in Architecture and Robotics

BOYS GOLF *Parker Amos* qualified for State

SPECIAL OLYMPICS 20 athletes competed

SKILLSUSA 19 National competitors

TEACHER/SERVICE PERSON OF THE YEAR *Kim Redinger* and *Tara Swanson* recognized as PCR-3's Teacher and Service Person of the Year, respectively

GIRLS SOCCER District Runners Up

BOYS TENNIS *Gavin Nichols* District Champion; three qualified for State

BOYS SWIMMING Conference Champions; 13th at State; seven state competitors; four school records broken

VOLLEYBALL District Champions; placed 3rd at State

PERFECT ACT PCHS Junior *Alex Beeman* scored a perfect 36 on the ACT

SOFTBALL District Runners Up

GIRLS TENNIS Two doubles teams qualified for state for first time ever

GIRLS GOLF Conference Champions, three qualified for State

CROSS COUNTRY Boys Conference and District Champions; *Andrew Johnson* Conference/District Champion, State medalist; *Sisely Mitchell* Conference Champion, State medalist; Boys 9th and Girls 14th at State

MARCHING BAND Multiple 1st and 2nd place finishes, several caption awards, and another Grand Championship trophy

CHEERLEADING Placed 4th at State

VOCAL MUSIC Six elementary students (*Hope Murray, Brooklyn Srock, and Lucy Wright, Calvin Jarboe, Delayna Noller, and Evan Skinner*) selected for All-State Children's Choir

NORTHLAND CAREER CENTER Designated a National Pacesetter School for fourth straight year; Received \$30M state matching grant to build new center

JOURNALISM Yearbook Gallery of Excellence award

ALL-STATE CHOIR 9 students selected

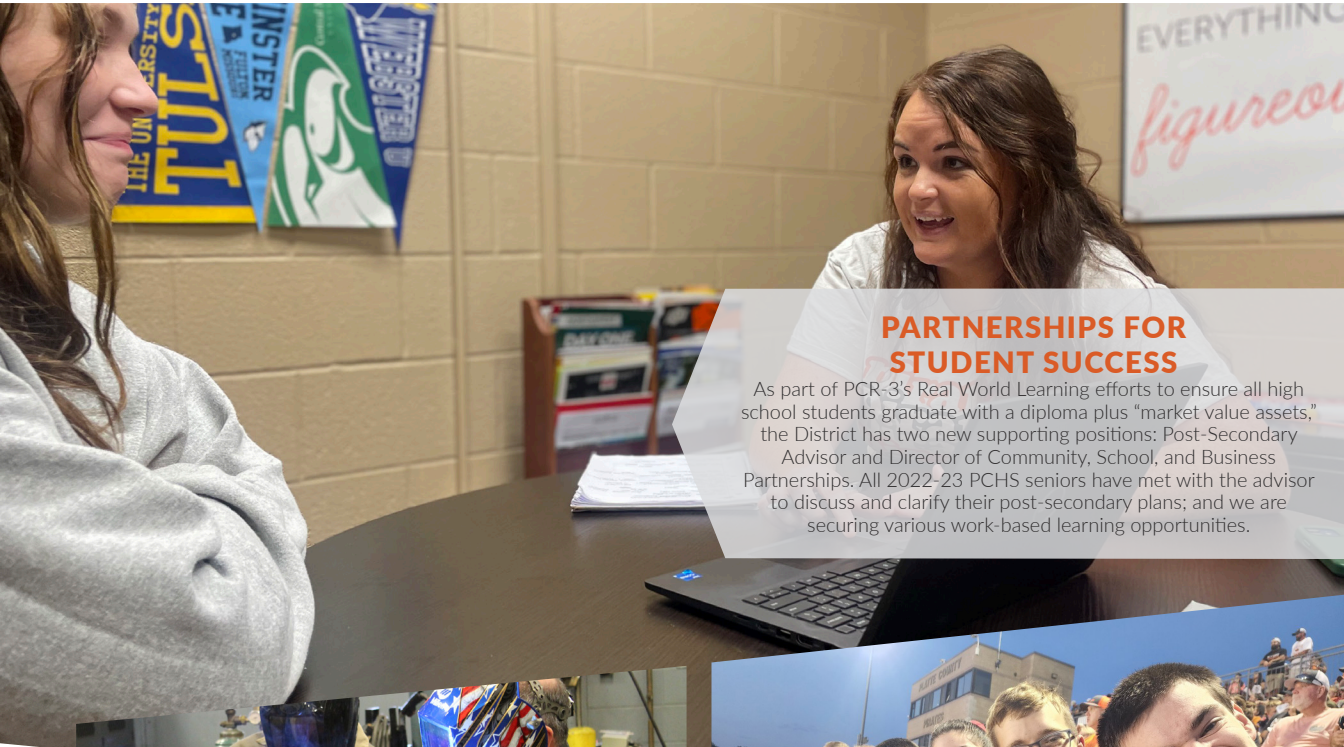
ALL-STATE BANDS 11 students selected

PIRATES ROCK 90 PCHS seniors pledged to promote healthy choices and good character to PCR-3 elementary and middle school students



PROVIDING MEANINGFUL EXPERIENCES

FOR SUCCESS IN LIFE



PARTNERSHIPS FOR STUDENT SUCCESS

As part of PCR-3's Real World Learning efforts to ensure all high school students graduate with a diploma plus "market value assets," the District has two new supporting positions: Post-Secondary Advisor and Director of Community, School, and Business Partnerships. All 2022-23 PCHS seniors have met with the advisor to discuss and clarify their post-secondary plans; and we are securing various work-based learning opportunities.



LEVERAGING RESOURCES AND EXPERIENCES

To provide additional experiences for middle school students, PCR-3 partnered with Northland Career Center to build a "Summer Seminar" series, exposing students to eight career areas with hands-on learning.



CONTINUED FOCUS ON BELONGING AND INCLUSION

We continue to follow the lead of our students and families as we focus on the goals of our Equity and Inclusion Plan: ensuring a culture of belonging and equity of access.



IN A SAFE AND CARING ENVIRONMENT



Platte County

TRADITION. PRIDE. VISION.

Paid for by:

Platte County R-3 School District
Dr. Jay Harris, Superintendent
998 Platte Falls Road
Platte City, Missouri 64079



Follow us @PlatteCountyR3!
Stay up to date on school news
by following PCR-3 on Twitter,
Instagram, and Facebook

2022-23 Facilities

ELEMENTARY SCHOOLS

Compass Elementary (K-5)
Pathfinder Elementary (K-4)
Siegrist Elementary (K-5)

SECONDARY SCHOOLS

Barry School (5-8)
Platte City Middle School (6-8)
Platte County High School (9-12)

OTHER SCHOOLS

Great Beginnings Early Childhood
(at District Education Center & Barry)
Northland Career Center

2023-24 Facilities

ELEMENTARY SCHOOLS

Barry Elementary (K-5)
Compass Elementary (K-5)
Pathfinder Elementary (K-5)
Siegrist Elementary (K-5)

SECONDARY SCHOOLS

Platte City Middle School (6-8)
Platte Purchase Middle School (6-8)
Platte County High School (9-12)

OTHER SCHOOLS

Great Beginnings Early Childhood
(at District Education Center & Barry)
Northland Career Center

JOIN US! Upcoming PCR-3 Events

JANUARY 31

Hall of Fame Inductions/
Athletic Signing Ceremony

FEBRUARY 8

Spring Parent/Teacher
Conferences

FEBRUARY 16

School Board Meeting

MARCH 11

PCHS Fine Arts Showcase

MARCH 16

School Board Meeting

MARCH 30

Kindergarten Kickoffs

APRIL 20

School Board Meeting

APRIL 7-8

Middle School Musical

APRIL 25-27

PCHS Spring Play

APRIL 28

Pirates ROCK End-of-Year
Celebration

MAY 7-12

PCHS Art Exhibition

MAY 3

PCHS Spring Choir
Concert

MAY 5

PCHS Drum! Show

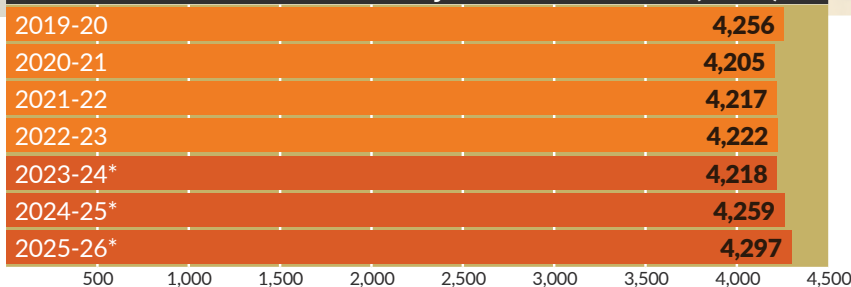
MAY 11

PCHS Spring Band
Concert

MAY 12

PCHS Evening of Jazz

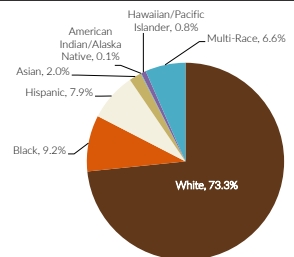
Enrollment and Future Projected Enrollment (K-12)



Enrollment and Future Projected Enrollment (K-12th Grade). PCR-3's 2022-23 enrollment is 4,222 K-12 students (4,297 including PreK), as of the official DESE count date in September. This equates to a 0.3% increase over last year's enrollment. Analysis from the District's demographer shows that PCR-3 tends to have a positive gain of students of in-migration to out-migration of students. 2020-21 showed the only negative gain, most likely due to the COVID-19 pandemic.

Source: DESE; *Latest enrollment projections in dark orange bars provided by RSP & Associates.

Student Demographics



Student Demographics. Thirty-three languages are reported as spoken at home, and 22.4% of students are eligible for free or reduced priced lunch (State: 45.9%) Source: DESE